

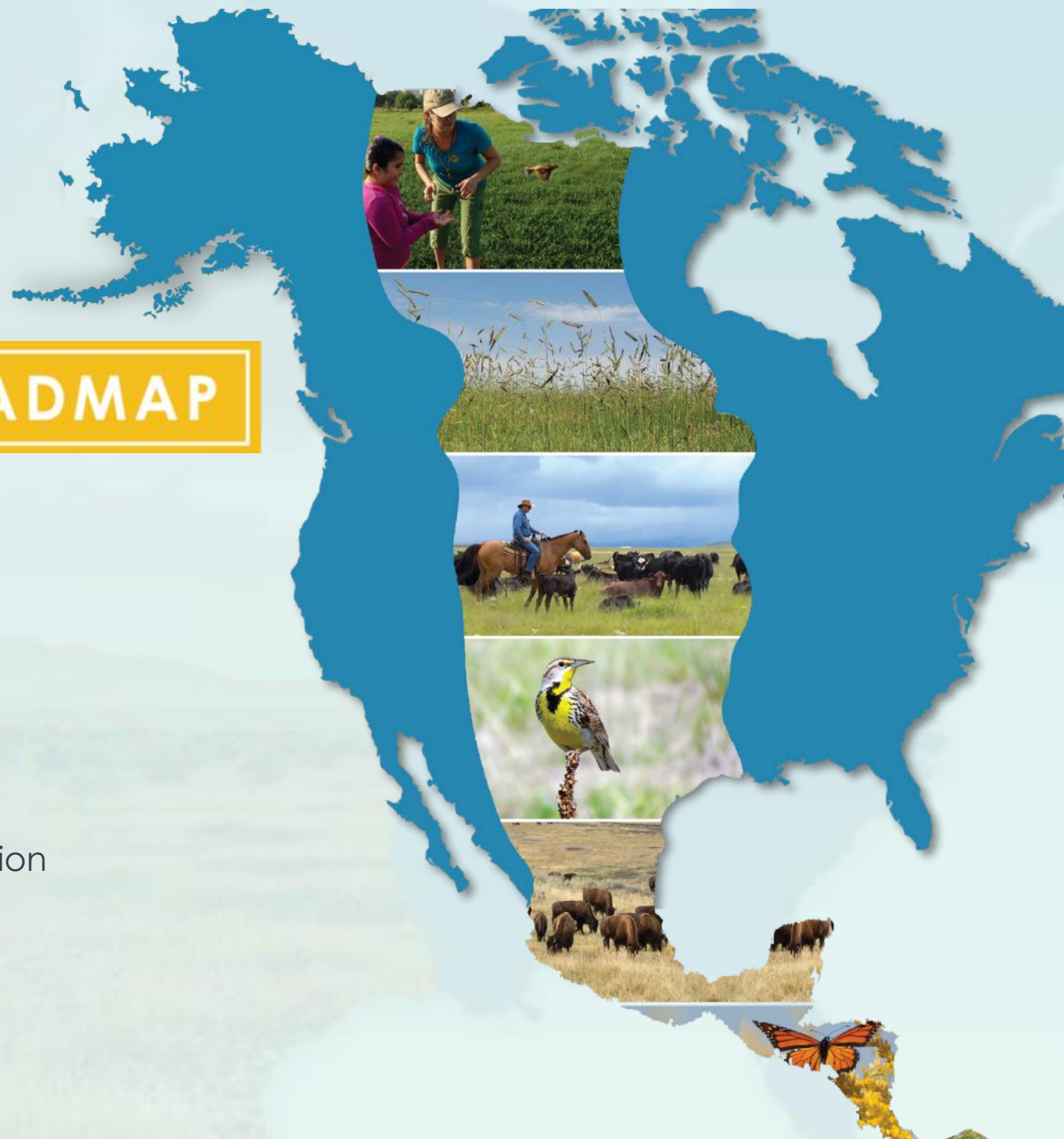
Collaborative Conservation Strategy

CENTRAL GRASSLANDS ROADMAP

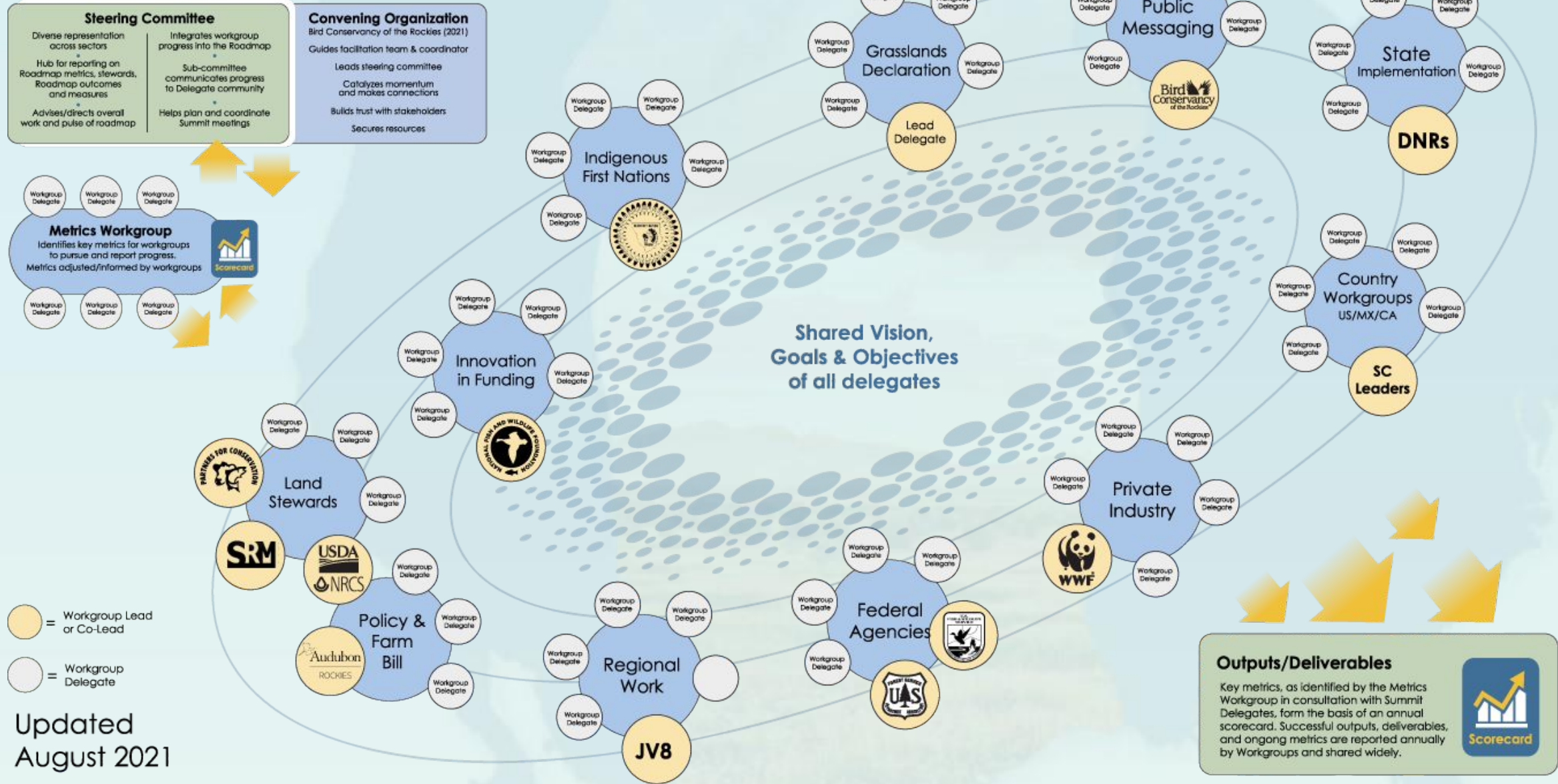
Tammy VerCauteren,
Executive Director, Bird Conservancy of the Rockies

John Carlson
USFWS Grasslands Coordinator Mountains to Plains Region

Matt Gray
The Rocky Mountain Innovation Lab



Constellation Governance Model



Steering Committee

- Diverse representation across sectors
- Hub for reporting on Roadmap metrics, stewards, Roadmap outcomes and measures
- Advises/directs overall work and pulse of roadmap

Convening Organization
Bird Conservancy of the Rockies (2021)

- Guides facilitation team & coordinator
- Leads steering committee
- Catalyzes momentum and makes connections
- Buils trust with stakeholders
- Secures resources

Metrics Workgroup

Identifies key metrics for workgroups to pursue and report progress. Metrics adjusted/informed by workgroups

Scorecard

● = Workgroup Lead or Co-Lead

○ = Workgroup Delegate

Updated August 2021

Outputs/Deliverables

Key metrics, as identified by the Metrics Workgroup in consultation with Summit Delegates, form the basis of an annual scorecard. Successful outputs, deliverables, and ongoing metrics are reported annually by Workgroups and shared widely.

Scorecard

Vision

- When we look out at the landscape, we witness diverse grasslands with thriving Indigenous and rural communities, millions of acres of connected land under various types of conservation, profitable working land with livestock and regenerative agriculture, flourishing ecosystems of soil, plants, and wildlife, and rivers and wetlands supporting aquifers, wildlife, production, and people.

Criteria for Collaborative Action

Sustainable grazing in a working lands context

- Research informed practices
- Respect and honor diverse, local voices
 - Indigenous to private landowners to ejidos
- Improve land health
- Support ecosystem processes
- Improve biodiversity
- Conserve water
- Increase habitat and arrest population declines
- Meet needs of 7 sectors, Indigenous nations, countries





An aerial photograph of a rural landscape, showing a large field with a winding river or stream on the right side. The image is dark and serves as a background for the text.

Move

- Manage

Beyond

- Provide Access to
Opportunity

Borders

- Share Information

PARTNERS IN FLIGHT LANDBIRD CONSERVATION PLAN



2016 Revision for Canada and Continental United States



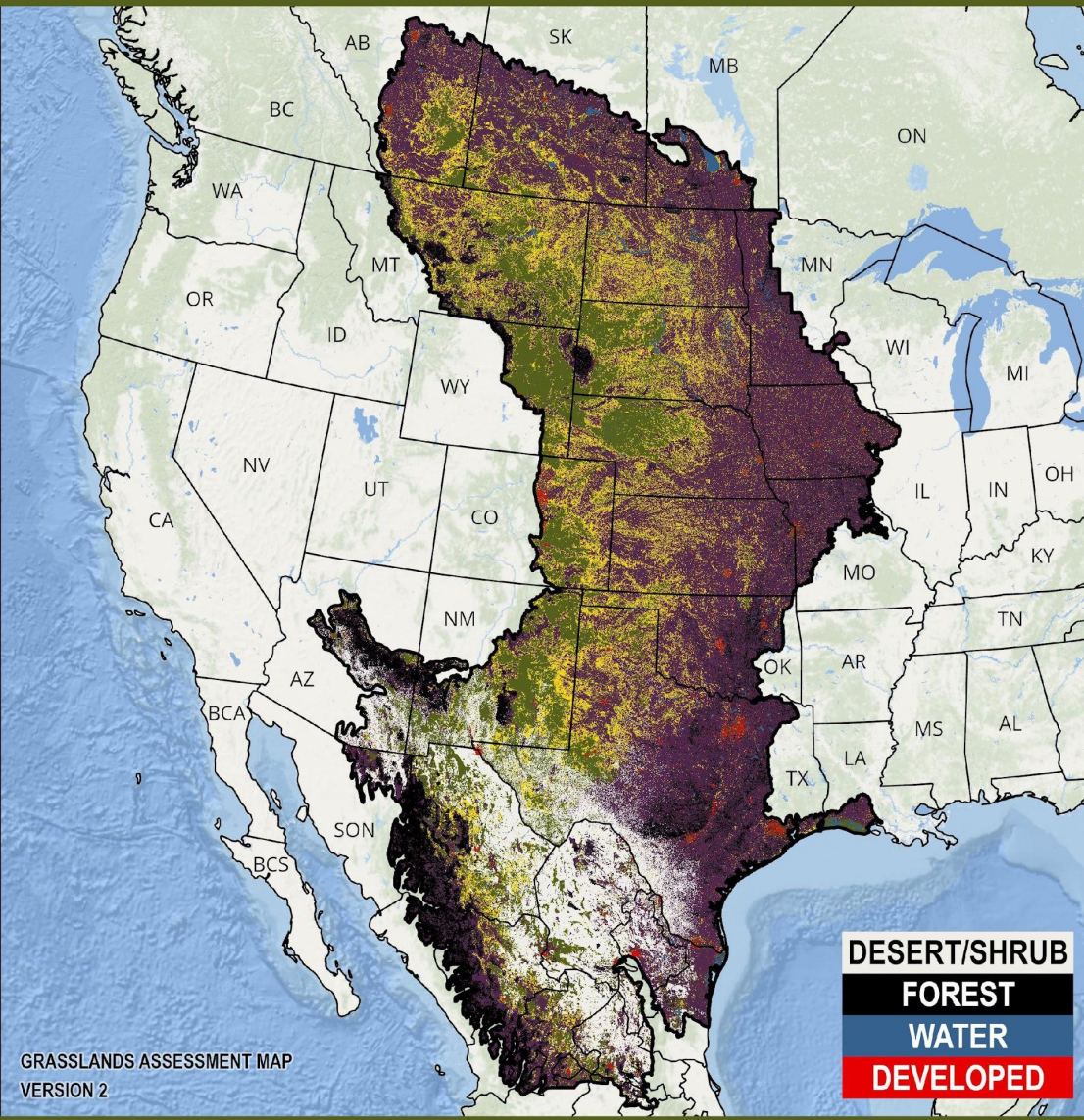


CENTRAL GRASSLANDS ROADMAP



CENTRAL GRASSLANDS ROADMAP

SUPPORTING AND GROWING OUR CORE OF GRASSLANDS

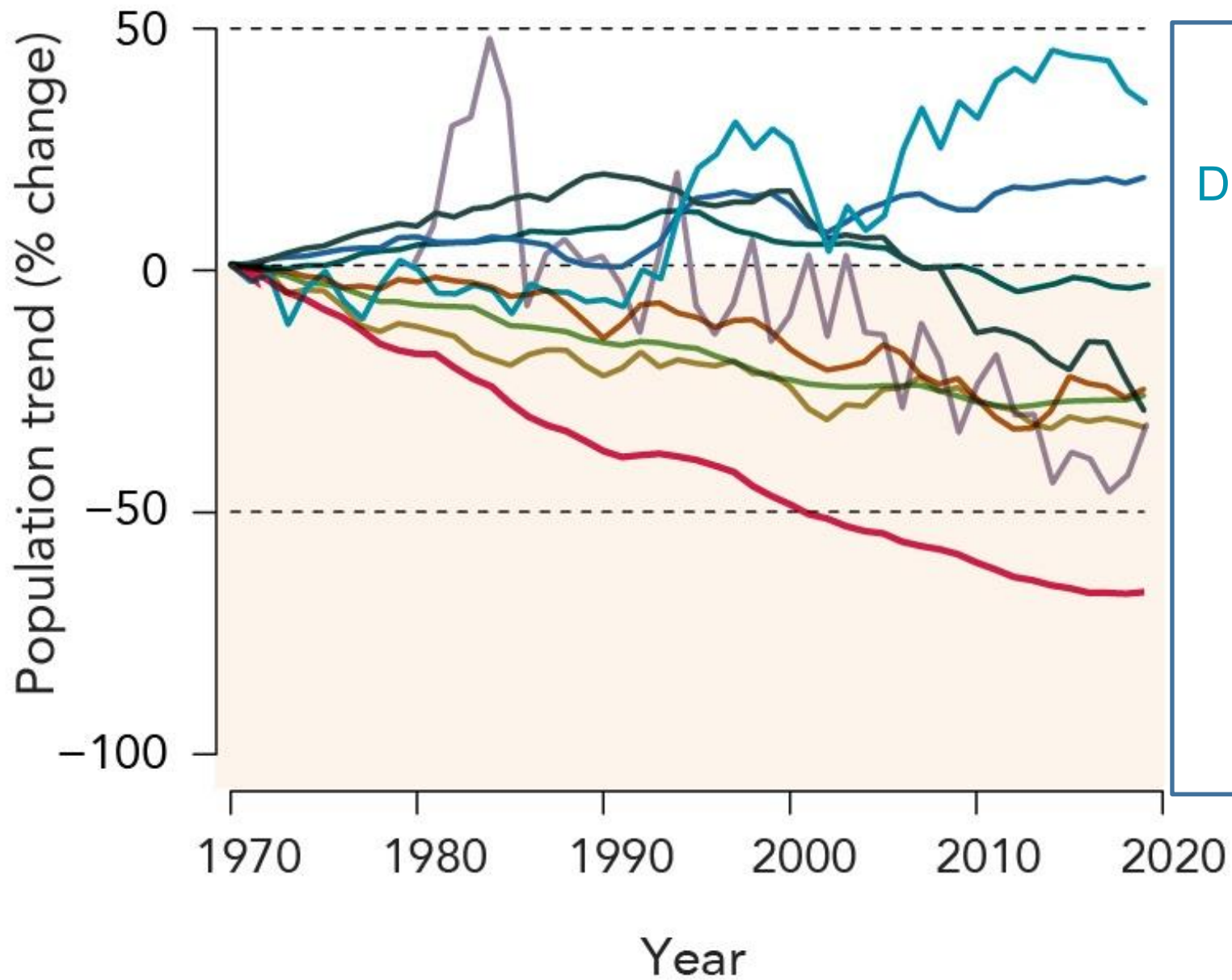


CONSERVATION CATEGORIZATION

CORE GRASSLANDS	VULNERABLE GRASSLANDS	CONVERTED/ALTERED GRASSLANDS
186,575,192 acres	133,808,659 acres	435,256,145 acres

*Based on currently available data. Plowed land consists of any area converted as of and since 2009 (see Plowprint.com). Encroached area is >5% tree cover or exceeding shrub cover threshold.





Increasing Populations

Dabbling/Diving Ducks (+34%)

Waterbirds (+18%)

Decreasing Populations

All others

Grassland Birds (-34%)

CENTRAL GRASSLANDS ROADMAP

Meaningful Indigenous Engagement

Honor & respect

Elevate

Integrate

Include

Support



CENTRAL GRASSLANDS ROADMAP

Sharing Information

Neighbor to Neighbor

Across Cultures

Across Nations





GRASSLANDS AND YOU

Grasslands contribute to the air you breathe, the water you drink, the food you enjoy, and the landscapes you explore. They offer natural beauty and rich cultural heritage. They help feed millions and support livelihoods and rural economies.

Outdoor Recreation
Grasslands are places to explore with birdwatching, hunting, fishing, hiking, and many other recreational activities.

Food Security
Grasslands and rural agrarian communities are the backbone of North America's food supply.

Good for the Herd—and Birds
Grasslands need grasses to thrive. Sustainable cattle ranching improves grassland health, provides jobs, food, and a viable habitat for wildlife.

Water for Many
Grasslands support watersheds, playas, rivers and streams—and recharge aquifers—ensuring clean, safe water for drinking, wildlife, agriculture and industry.

Traditional Knowledge
Indigenous people are finding connection by restoring traditions that provide benefits for grasslands and indigenous communities.

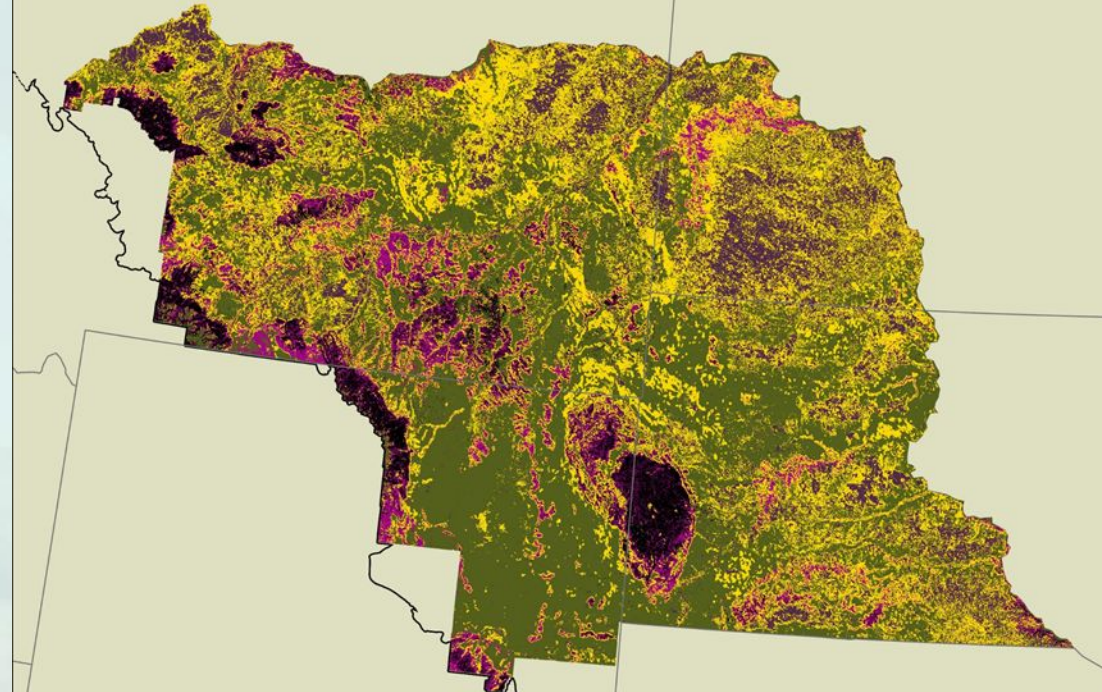
Super Soil
Soil holds water, improving drought resilience and plant growth. Roots, organic material and microbes capture carbon to help fight climate change.

Immense Biodiversity
Hubs of birds, bees of six and prairie dogs, burrowing owls and flowers are among examples of the many plants and animals found on grasslands.

Northern Great Plains JV

CENTRAL GRASSLANDS ROADMAP SUPPORTING AND GROWING OUR CORE OF GRASSLANDS

NORTHERN GREAT PLAINS
JOINT VENTURE



GRASSLANDS RISK MAP
VERSION 1.0

FOREST

CONSERVATION CATEGORIZATION

CORE
GRASSLANDS

VULNERABLE
GRASSLANDS

CONVERTED/ALTERED
GRASSLANDS

*Based on currently available data. Plowed land consists of any area converted as of and since 2009 (see Plowprint.com). Encroached area is 50% woody vegetation.

Partner-led efforts

Private lands biologists

Conservation tools



Science planning and tools

Bird outcomes from
conservation action

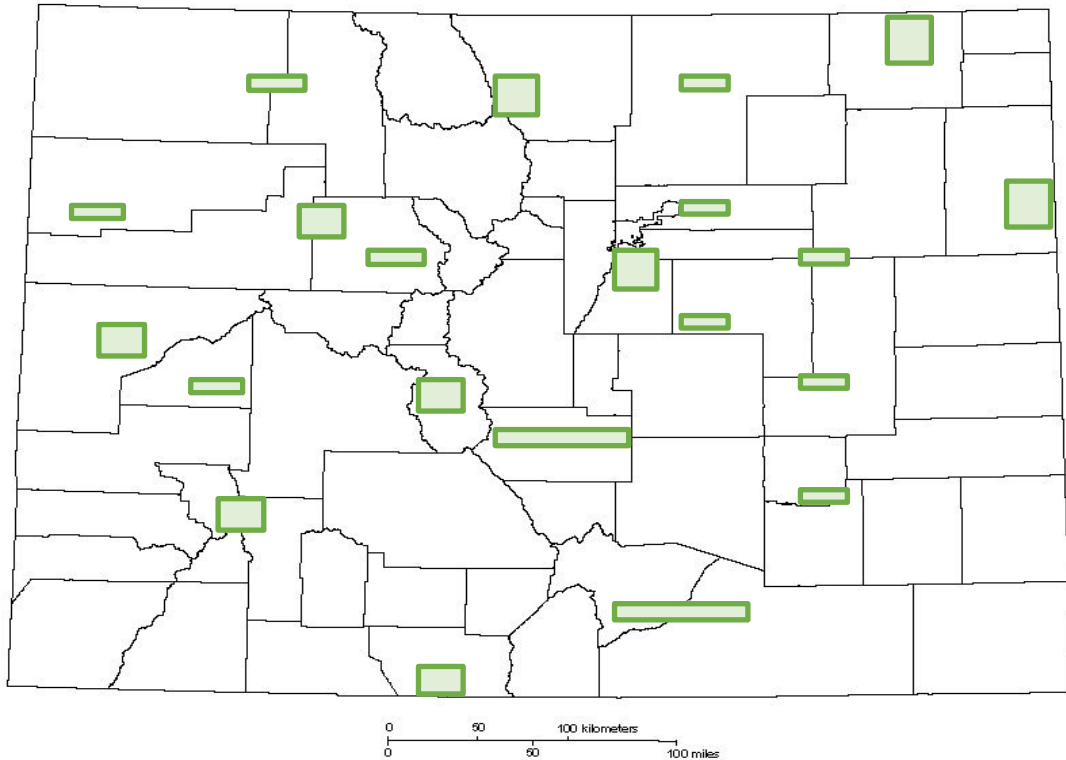
Social science of conservation



CENTRAL GRASSLANDS ROADMAP

A

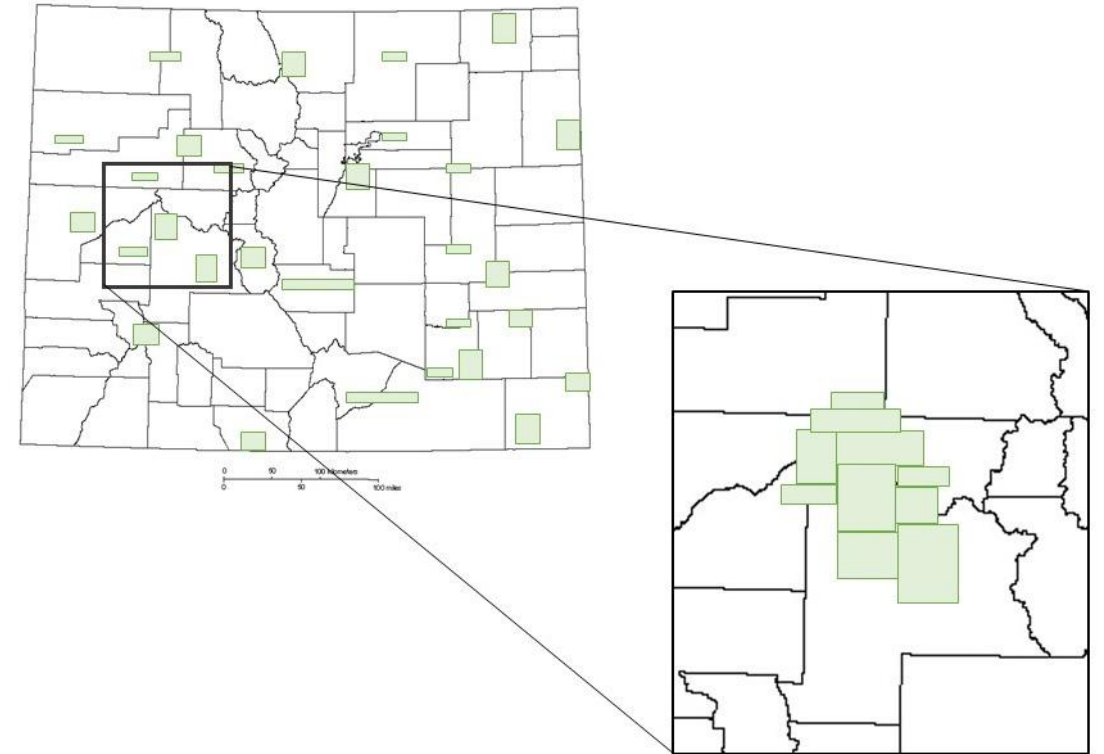
COLORADO



Isolated

B

COLORADO

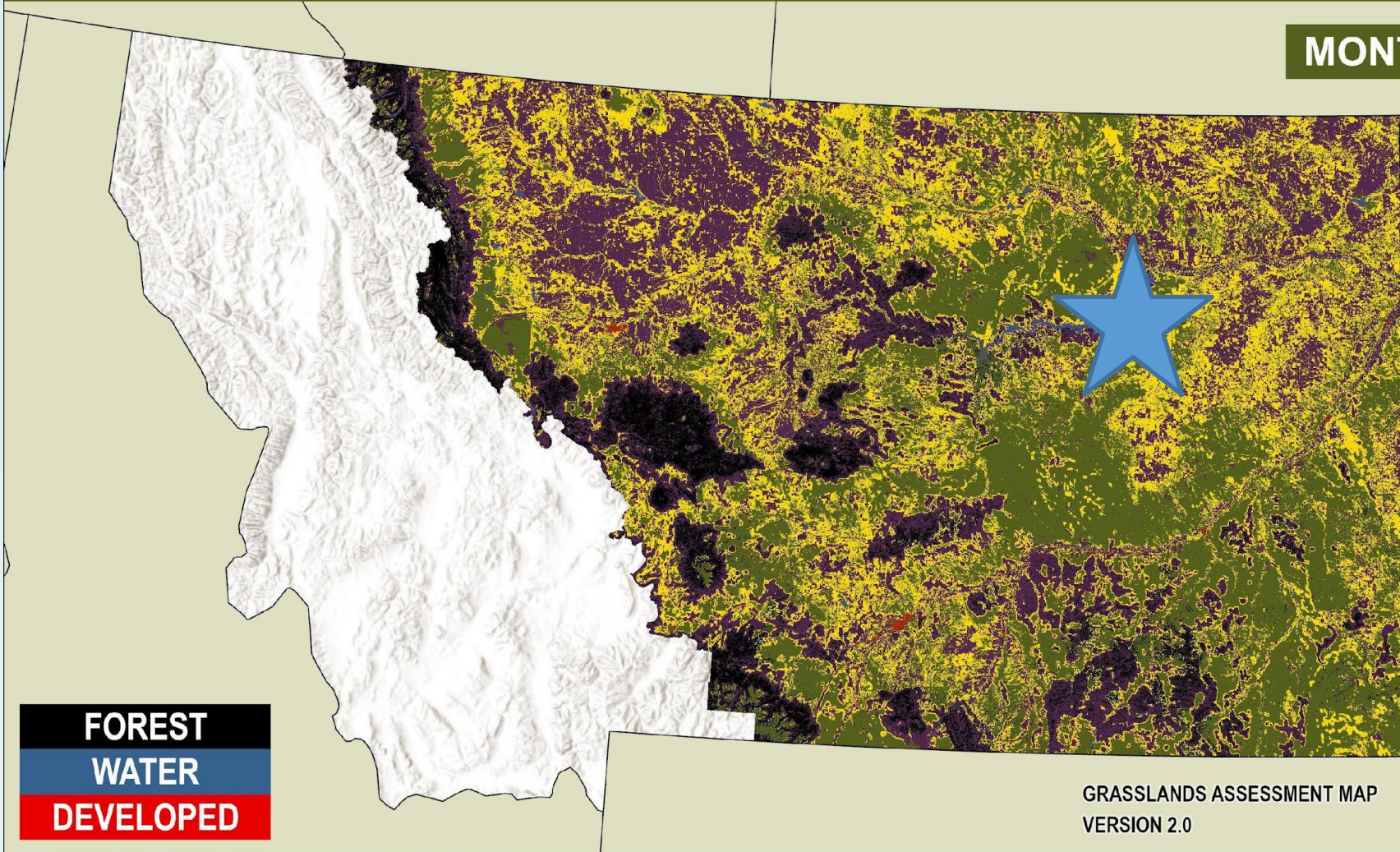


Contagious

CENTRAL GRASSLANDS ROADMAP

SUPPORTING AND GROWING OUR CORE OF GRASSLANDS

MONTANA



CONSERVATION CATEGORIZATION

**CORE
GRASSLANDS**

**VULNERABLE
GRASSLANDS**

**CONVERTED/ALTERED
GRASSLANDS**

*Based on currently available data. Plowed land consists of any area converted as of and since 2009 (see Plowprint.com). Encroached area is >5% woody vegetation.

So how can the Roadmap support you?

Based on what was shared, **the Roadmap works hard to include landowner and rancher priorities, and to also include rancher and landowner-focused thinking in the vision, guiding criteria, and principles of practice.**

We want to make sure that the implementation continues to reflect your values, needs and solutions, and that it is lead by local and regional efforts, while supported at a biome-level.

Roadmap Priority: Increase Support of Collaborative Initiatives

- How to help catalyze local collaboration, and direct funding and resources to collaborative initiatives.
- What do you want others to know about the CMR Community Working Group? Where can support be elevated for this collaboration?
- What challenges do you face to collaborating effectively?

Roadmap Priority: Increase Support for what is working, and identify new innovations

- What is working for you when it comes to range improvement, cattle production and partnering with federal partners?
- What is working with state and NGO partners and foundations?
 - What isn't working?
- What must be done to get more landowners involved and engaged?
 - What are barriers that can be overcome? What are fears?
- Do the 3 buckets of land conservation, restoration and enhancement resonate with you?
 - Is there a 4th bucket or new innovation?



**It's up to us
to be change
agents!**

Mathew Pendleton, MacaulayLibrary

Think beyond borders.

Thank you.

Roadmap Priority: Increase Support of Collaborative Initiatives

- How to help catalyze local collaboration, and direct funding and resources to collaborative initiatives.
- What do you want others to know about the CMR Community Working Group? Where can support be elevated for this collaboration?
- What challenges do you face to collaborating effectively?

Roadmap Priority: Increase Support for what is working, and identify new innovations

- What is working for you when it comes to range improvement, cattle production and partnering with federal partners?
- What is working with state and NGO partners and foundations?
 - What isn't working?
- What must be done to get more landowners involved and engaged?
 - What are barriers that can be overcome? What are fears?
- Do the 3 buckets of land conservation, restoration and enhancement resonate with you?
 - Is there a 4th bucket or new innovation?