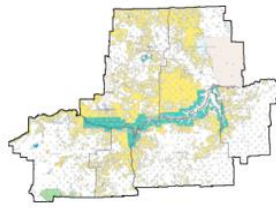


MRCDC  
PO Box 118  
Winnett, MT 59087



CMR COMMUNITY  
WORKING GROUP

Phone: (406) 454-0056  
[mrcdc@macdnet.org](mailto:mrcdc@macdnet.org)  
[www.cmrcwg.org](http://www.cmrcwg.org)

---

## CMR Community Working Group Meeting

March 16, 2023 from 10:00am – 3:00pm *(Please RSVP by March 8)*  
The Calvert Hotel, Lewistown, MT and Zoom

### Meeting Theme: Grasslands Health

- 10:00 Welcome and Grounding Question– Bill Milton, Facilitator
- 10:15 Stakeholder Updates – Everyone
- 11:15 Central Grasslands Roadmap – Tammy VerCauteren and Matt Gray
- 12:30 Break for Lunch (please be prepared to pay \$12-\$16 in cash)
- 1:30 Rangeland Monitoring Group Update – Bill Milton
- 2:00 Group Discussion or Breakout Groups regarding presentations
- 2:45 Meeting Summary
- 3:00 Adjourn