

Options for re-enrolling in CRP

CMR CWG



History



History



**Farm
Service
Agency**

fsa.usda.gov

History



**Farm
Service
Agency**

fsa.usda.gov

History

- **CRP became an FSA Program - Food Security Act of 1985**
- **7 CFR Part 1410**

- **CRP is a program administered by FSA, and NRCS is integrally involved in the technical aspects of the program**



CRP Objective



Cost-effectively assist owners and operators in conserving and improving the nation's natural resource base

CRP Emphasis

- **Protect soil, water, and wildlife resources**
- **Improve and preserve water quality**
- **Enhance fish and wildlife habitat**
- **Address issues raised by local, State, regional and national conservation initiatives**



**Farm
Service
Agency**

fsa.usda.gov

Types of CRP Contracts

- **General – permanent cover (grass or trees) to protect soil from erosion, and provide wildlife habitat**
- **Continuous – focused primarily on water quality (wetlands and riparian areas) and habitat**



Types of CRP Contracts

- **State Acres For Wildlife Enhancement (SAFE) – focus on wildlife habitat**
 - General (grass/tree practices)
 - SAFE offers have a competitive advantage in National ranking
 - Continuous (wetland/riparian areas)

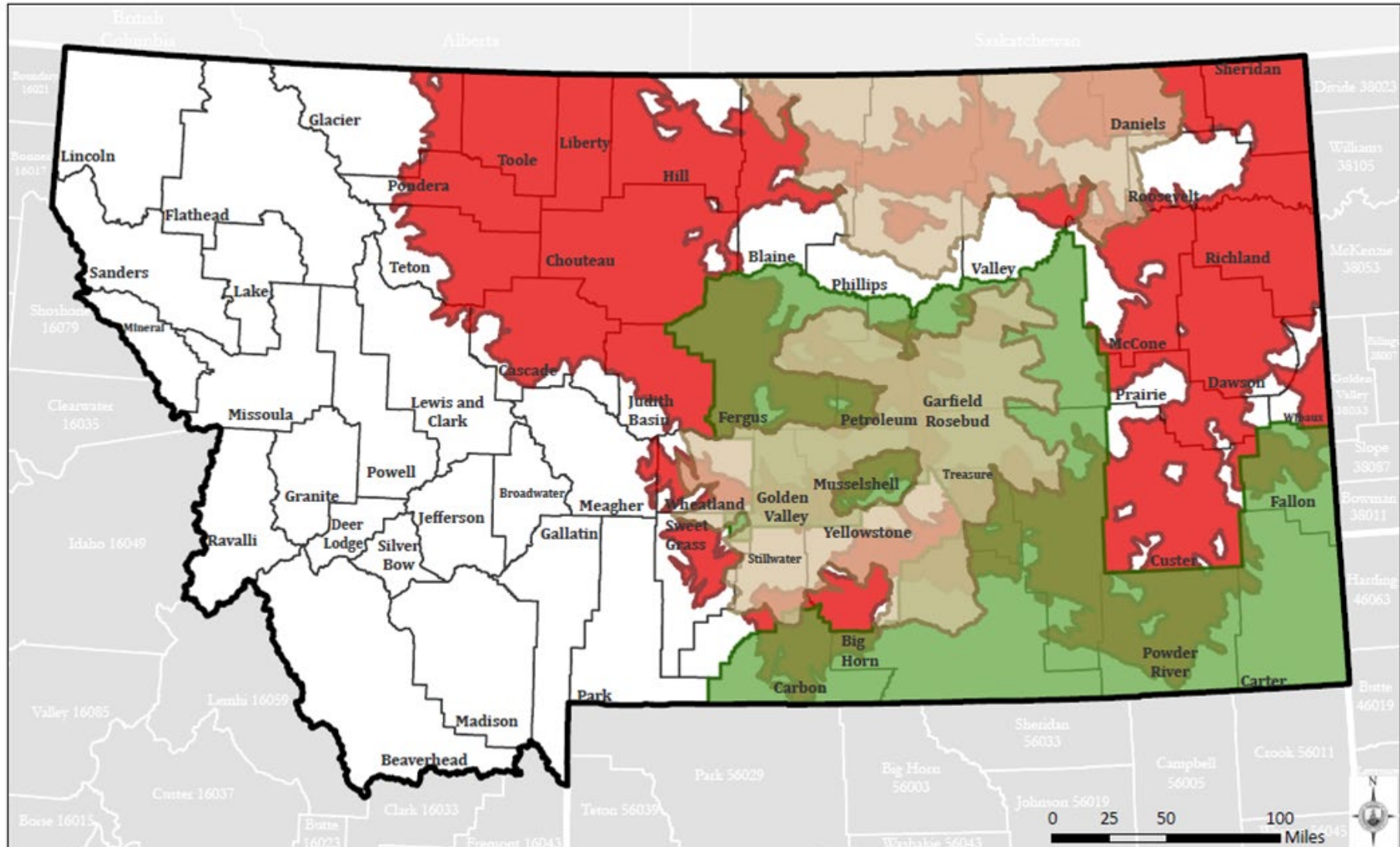
SAFE Projects in Montana

- Pheasant Winter Cover & Prairie Pothole
- Sagebrush-Grassland
- Declining Grassland Birds





USDA Farm Service Agency Montana CRP-SAFE Eligibility



Legend

- Declining Grassland Birds
- Sagebrush Grassland Restoration

Map is intended for Farm Service Agency (FSA) business purposes only. Map serves only as a general reference map.
 USDA is an equal opportunity provider, lender and employer.
 Source: USDA Farm Service Agency and the State of Montana.

Types of CRP Contracts

- **Grasslands – focus on keeping acreage in permanent cover and protect it from being converted to being annually cropped**



Practices - General

- **CP1 – Permanent Introduced Grasses & Legumes**
- **CP2 – Permanent Native Grasses**
- **CP3 – Tree Planting**
- **CP3A – Hardwood Tree Planting**
- **CP4D – Permanent Wildlife Habitat**
- **CP12 – Wildlife Food Plot (can only be used with certain other practices)**



**Farm
Service
Agency**

fsa.usda.gov

Practices - General

- **CP25 – Rare and Declining Habitat**
- **CP38E-1 – SAFE Introduced Grass**
- **CP38E-2 – SAFE Native Grass**
- **CP38E-4D – SAFE Wildlife Habitat**
- **CP38E-12 – SAFE Wildlife Food Plot**
- **CP42 – Pollinator Habitat**



**Farm
Service
Agency**

fsa.usda.gov

Practices - Continuous

- **CP5A – Field Windbreak**
- **CP8A – Grass Waterways**
- **CP9 – Shallow Water Areas for Wildlife**
- **CP12 – Wildlife Food Plot (only with certain other practices)**
- **CP15A – Contour Grass Strips**
- **CP16A – Shelterbelt**
- **CP17A – Living Snow Fences**



**Farm
Service
Agency**

fsa.usda.gov

Practices - Continuous

- **CP18B – Permanent Vegetation to Reduce Salinity**
- **CP18C – Permanent Salt Tolerant Cover**
- **CP9 – Shallow Water Areas for Wildlife**
- **CP21 – Filter Strips**
- **CP22 – Riparian Buffer**
- **CP23 – Wetland Restoration**
- **CP23A – Wetland Restoration, Non-Floodplain**



**Farm
Service
Agency**

fsa.usda.gov

Practices - Continuous

- **CP24 – Cross Wind Trap Strips**
- **CP27 – Farmable Wetlands**
- **CP28 – Farmable Wetland Buffer**
- **CP29 – Marginal Pastureland Wildlife Habitat Buffer**
- **CP30 – Marginal Pastureland Wetland Buffer**
- **CP33 – Habitat Buffers for Upland Birds**



**Farm
Service
Agency**

fsa.usda.gov

Practices - Continuous

- **CP37 – Duck Nesting Habitat**
- **CP38B-23 – SAFE Wetland Restoration**
- **CP38B-23A – SAFE Wetland Restoration, Non-Floodplain**
- **CP39 – FWP Constructed Wetland**
- **CP41 – FWP Flooded Prairie Wetland**
- **CP42 – Pollinator Habitat**
- **CP43 – Prairie Strips**



**Farm
Service
Agency**

fsa.usda.gov

Practice - Grasslands

- **CP88 – Permanent Native or Introduced Grasses and Legumes**
 - Working lands program – usual haying/grazing policies do not apply
 - No cropping history requirement
 - No species requirements like General or Continuous Signup (no renovations)
 - Low payment rate – but if you get to operate how you normally would, at least you get paid a little for using your grazing/hay ground



**Farm
Service
Agency**

fsa.usda.gov

Continuous Payments

90% NASS Rate

32.5% Signup Incentive Payment (new enrollments only)

20% Practice Incentive Payment (new enrollments only)

10% Rental Incentive Payments (only certain practices)

50% Cost share to establish cover, and any infrastructure



**Farm
Service
Agency**

fsa.usda.gov

General Payments

85% NASS Rate

50% Cost share to establish cover, and
any infrastructure



**Farm
Service
Agency**

fsa.usda.gov

Grasslands Payments

75% NASS Rate

50% Cost share for internal fencing for rotational grazing, and any infrastructure



**Farm
Service
Agency**

fsa.usda.gov

Transition Incentive Program

- **Voluntary transition of land under an expiring CRP contract from an owner/operator to a veteran, beginning, or socially disadvantaged farmer or rancher to return the land to production for sustainable grazing or crop production.**
 - Cannot be a family member
 - Must have long-term lease (5 yrs) or sell
 - Expiring contract holders receive up to 2 additional years of annual rental payments



**Farm
Service
Agency**

fsa.usda.gov

Questions?



**Farm
Service
Agency**

fsa.usda.gov